



# GMT MONTHLY MEMBERSHIP PROGRESS REPORT

Results as of: 5/31/2020

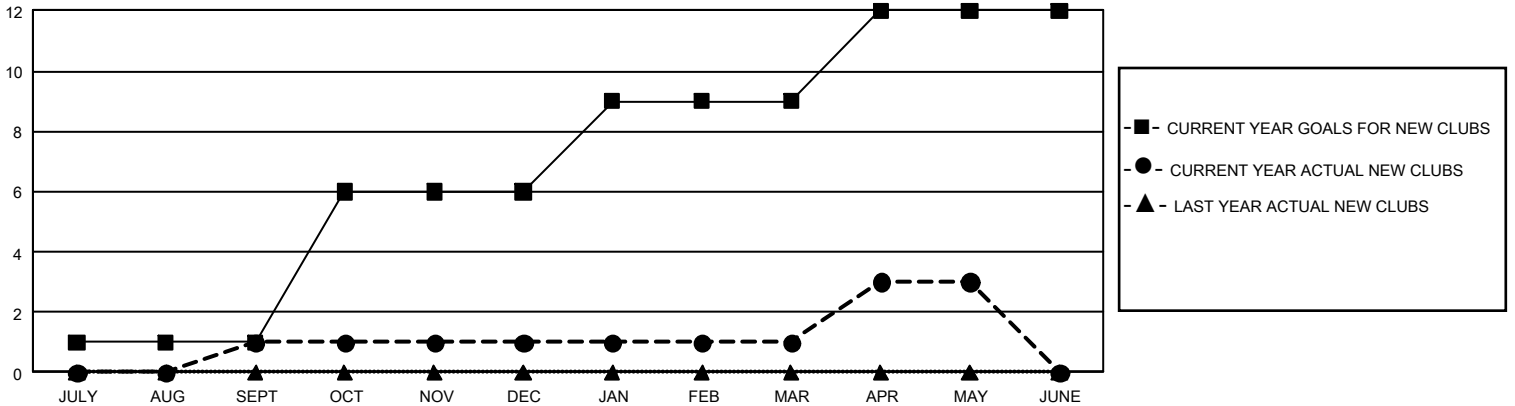
## GMT Constitutional Area 5 - J, Group I

GMT: OPEN

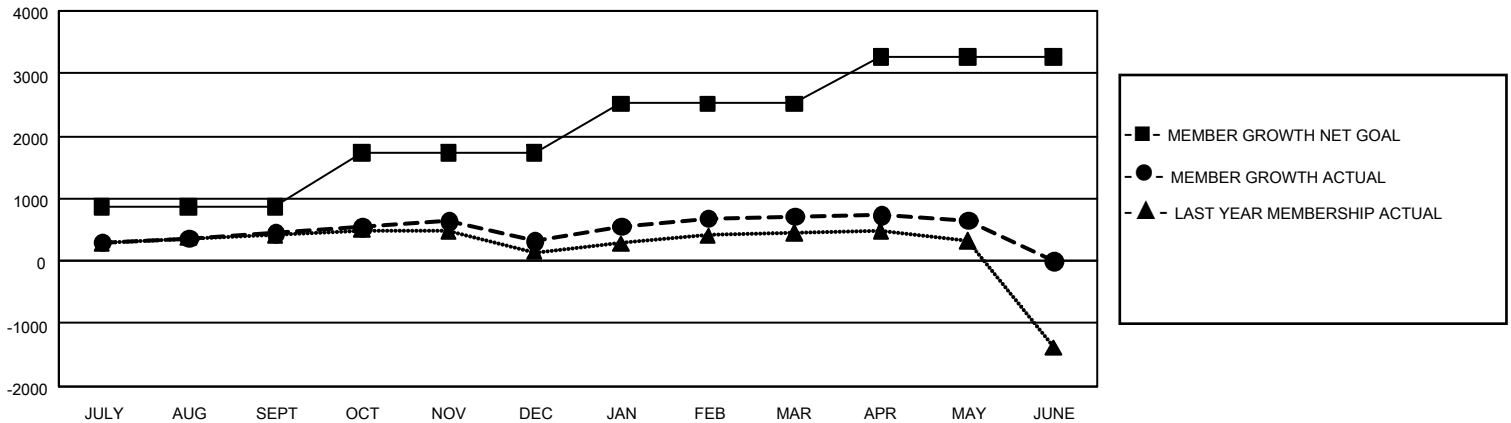
REPORT DOES NOT INCLUDE CLUBS IN UNDISTRICTED AREAS.

Clubs				Members			
RESULTS FOR 2019-2020				RESULTS FOR 2019-2020			
QUARTER	NEW CLUB GOAL	NEW CLUBS	DROPPED CLUBS	QUARTER	MEMBER GROWTH NET GOAL	MEMBER GROWTH ACTUAL	DROPPED MEMBERS ACTUAL (including transfers)
JULY/AUG/SEPT	3	1	2	JULY/AUG/SEPT	2,595	1,034	525
OCT/NOV/DEC	15	0	1	OCT/NOV/DEC	2,598	584	702
JAN/FEB/MAR	9	0	0	JAN/FEB/MAR	2,358	797	380
APR/MAY/JUNE	9	2	0	APR/MAY/JUNE	2,265	243	289

**GOALS AND ACTUAL NEW CLUBS CUMULATIVE**



**GOALS AND ACTUAL MEMBERS CUMULATIVE**



<b>DROPPED CLUBS: 3</b>	635 CLUBS OF 818 ADDED 1 OR MORE NEW MEMBERS	<b><u>GENDER DISTRIBUTION</u></b> MALE            26,419 (73.18%) FEMALE         9,683 (26.82%)
<b><u>DROPPED MEMBERS</u></b> DECEASED            255 CLUB CANCELLED      35 OTHER                 1,605 <hr/> TOTAL                 1,895	<a href="#">CLICK HERE FOR CUMULATIVE MEMBERSHIP DATA</a>	TOTAL FAMILY UNIT MEMBERS            15,819  FAMILY MEMBERS PAYING HALF DUES      8,570